

Greenwich Learning Disability Partnership Board

27 March 2009, at Woolwich YMCA, Antelope Road, Woolwich, SE18

Draft minutes

Co-chairs of Partnership Board

Councillor Angela Cornforth, Pamela Nabelama

Access to Employment

Amreeta Matadeen, Priya Bose

Access

James Bennett, Lenny Dunnett, Mary O'Connell, Wendy Freeman, Lorraine Mason, Brian Lee, Lana Dunnett, G Yomkino, Donald Kenny

Community Learning Disability Team (CLDT)

John Auld, Paul Barry

Community Link

Tammy Banham, John Spencer, Donna Ferguson, P Keen, AP. Ferlance, Taiwo Jagun, Kehinde Jagun, Wumni

Advocacy in Greenwich

Tinyan Obasuyi, Leila Ntege, Debbie Hosten, Anna Whittaker

Greenwich Adult Services

Dean Bogle, Bernard Dattadeen, Assistant Director Adults

Greenwich Community College

Daniel Marchant, Nadia Khan

Greenwich Mencap

Jan Smith

Oxleas NHS Foundation Trust

Stephen Whitmore, Elaine Hurault, Rebecca Glen, Liz McGraph, Dominic Berry, Sandi Mills

Queen Elizabeth Hospital

Sue Ludlow



Angela



Pamela



Leila



Debbie

Ref. item 7 Olympics and Paralympics

Councillor Cornforth remembered the last meeting talking about the **Olympics** and how people with learning disabilities could do events in the run up. Service users were invited to think about what they would like to do. One of the workshops could be used to look at this.



Olympics

4 Feedback from groups

Health: Liz McGraph

Liz told the meeting about the morning's workshop. Health promotion at the PCT is training GPs and Practice Nurses in Greenwich so that they can offer people regular health checks. The **Six Lives** report had shown the need for health services for people with learning disabilities to work better.



'Six Lives' Report

The workshop looked at the **personal health profile**.

Maureen Hayley told the meeting about her good experience of having one of these. Profiles hold information on the person's health so people can take these to medical appointments. They give health professionals as much useful information on the persons' health as possible.



The Lead for this work is **Mark Bradley**.

Email: mark.bradley@oxleas.nhs.uk

Carers: John Auld

John talked about the morning's workshop. Only a few carers had been at the meeting. There had been a useful discussion with the providers around how carers could be more engaged.

There was an idea that an **evening event** could be held. This information will be fed back to the Carers' Strategy group. More information will be brought back to a future meeting.

Action:
John Auld

5 PCT Standards

Graham Hewett from the Primary Care Trust introduced this. Every year the **Healthcare Commission** checks services for quality against standards. Views are being asked for from a range of different parts of the Local Authority and Health partners. This year Learning Disability Partnership Boards have been included.

There was a question about the need for **more doctors and nurses**. Graham said there has been a 10 year plan with more money for nurses and doctors and the service has seen more doctors and nurses.

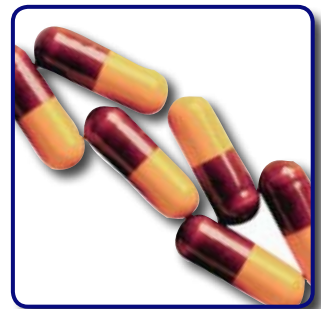
There was a question about **cleaning** in hospitals. Graham said that the cleaning is done by different agencies.

Queen Elizabeth Hospital was inspected by the Health Care Commission 3 months ago. Results were very good.

There was a question on whether there could be more medicines to help people **live longer or live normal lives**. Graham said that it is a main aim of the Primary Care Trust - to help **men** to live longer, as women live longer.

The Board said that there was not enough time to get comments ready for **this** year but it could look at this over the next few months and get ready for **next year**.

Some people said that the presentation should have been easier for people with learning disabilities to understand.



6 Valuing People Now

Bernard Dattadeen gave the Board a presentation on the 3 year plan for **Valuing People Now**. Key ideas were: choice, dignity and respect and main areas were housing, education, jobs, health and how people with learning disabilities can take part in groups who make decisions.

The meeting talked about ideas in the recent Public Health report like smoking, healthy eating, and sleep.

Stephen Whitmore talked about the media reports on the deaths of 6 people with learning disabilities because of lack of health care. Oxleas will talk to those working with



people with learning disabilities, with the Council and health services to look at the issues in the **Six Lives**.

Leila asked whether people with learning disabilities could get support to go to the **Health sub group** chaired by **Langley Gifford**. The group meets every two months. It looks at health issues for people with learning disabilities. This will be passed to Langley.



'Six Lives' Report

7 Olympics and Paralympics update

The update was put back as **Patrick Worthington** could not be at the meeting.

8 Learning Disability Awareness Week - 22- 28 June

There had been events in the Town Hall last year to mark this. The event is to tell people about learning disability. Service users were asked to think about what they would like to do this year. They can send ideas to **Celine Corbin**:

Phone: **020 8921 2491**

Email: celine.corbin@greenwich.gov.uk



Learning Disability Awareness Week

9 Have your say

Food allergies

A Board member asked questions about food allergy. The Board talked about this.

Networks

Cicilene Moseley and **Leila Ntege** had been to the **London Regional meeting**. This looks at government policy and works with **Valuing People**. It helps people know that their voices are being heard and that things are happening.



Cicilene

10 Any other business

None

11 Meeting dates for 2009

Friday 12 June (11.-3 p.m.)

Friday 18 September (11.-3.p.m.)

Friday 4 December (11.-3.p.m.)

Next Meeting

