

Partnership Board meeting

Where Town Hall, Wellington Street, Woolwich

When Friday 23 September 2006



Town hall

Who was at the meeting?

Councillor David Grant (Co- Chair)	Cabinet Member for Health, Adults and Older People
Dino Powell (Co-Chair)	GCAP
Simon Froud	Greenwich Social Services
Kathy Smith	Working with Words
Donald Kenny	
Doreen Edwards	Greenwich Connexions
Steve Maxwell	GCAP
Kay Gibbons	Queen Elizabeth Hospital
Belinda Collister	ACCESS
Teresa Campbell	Greenwich Community College
Sarah Baker	Milbury Care Services
Marie-Anne Brown	Adults and Older People (Greenwich)
Charlotte Dore	Supporting People
Claire Smith	Day Services
Gary French	Day Services
James Bennett	GCAP
Sandra Pinson	Community Link
Bernard Datadeen	Community Link
Lara Rowlinson	Mencap
Dean Bogle	Learning Disability Outreach



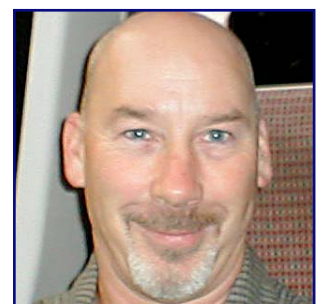
Councillor Grant



Dino



Kathy



Steve

Robert Templeton

Team, Social Services

Sarah Burchell

Oxleas/Greenwich Learning Disability Services

Evette Vaughan

Oxleas NHS Foundation Trust
Sherard Road

Stephen Whitmore

Director, CAMHS and Learning Disability Service, Oxleas NHS



Evette

1. Sorry from people who couldn't come to the meeting

Paul Wood

Mark Grainger

Geraldine O'Halloran

Dr Shaun Gravestock

Anita Rickard

Lesley Davis

Mary O'Connell

Phil Davis

Jason McCulloch



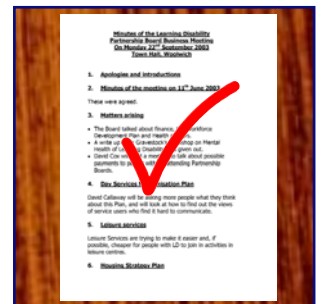
Anita

2. Minutes of last meeting, 23 June 2006: were agreed.

3. Matters arising

Ref. Item 4, Working in Partnership/Section 31

Ajibola Awogboro, who is Services Manager, Commissioning and Business Planning, Greenwich Council, led a workshop about how the Council will be the lead commissioner for learning disability services from October.



4. Suggestions for Partnership Board

A new way of working:

the morning's workshop had looked at **subgroups** which will be part of the new way the Board works. Key ideas:

- a Each sub-group would have a **lead** and a **co-chair**.
- b We will ask people to join.
- c Were **other sub-groups** needed?



- How we make sure **people with profound learning**



disabilities get the information they need?

- Setting up a communications group to **make information easy**

- d Making a plan of workshops for the year.
- e **Guidelines** and **Terms of Reference** for workshops should be written.
- f We need to find a way to **choose champions** and for service users to join workshops.
- g **Subgroups reporting back**: This could be done every three months or so.

Sub-groups and membership

- a Some sub groups are **already** running.
- b A letter asking for members could be sent to **Mencap**, groups involved with the Partnership Board and groups in the Council.
- c **Training on being a champion**: we should ask the **Valuing People Support Team**.
- d **Chair/Champion**: These 2 jobs could support each other. Chairs and champions would be members and other people would be welcome.
- e **The Terms of Reference** will also say who leads the work.

Places for the Board to meet

The Board talked about the list of different places to hold Board meetings. We could think about other places between now and the next meeting. The December meeting will be at the **Forum @ Greenwich**.

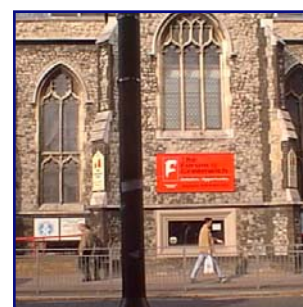
5. Open session - your say

The meeting looked at the suggested new way for the Partnership Board to work. There were more ideas:

- a We need to look at **when** meetings took place.
- b **Lara Rowlinson** will talk to 2 carers' reps from



Easy information



Forum @ Greenwich



Mencap's committee.

- c We need a way of feeding back information to people who can't get to meetings or who don't like taking part in larger meetings.
- d We could share information through minutes.
- e We could ask the **Valuing People Support Team** for help.
- f We will look at how it runs meetings and if they should be **less formal** to help people feel more comfortable.
- g The Board should remember the good work that has taken place in workshops in the past.



Valuing People Support Team

6. Best Value Review (Adults)

A presentation by **Simon Froud**

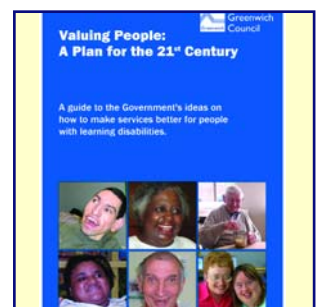
Healthier Communities and Older People: This review looked at services, how they are delivered and how money is spent. It also looked at complex needs, staffing and training.



Simon

Other issues were:

- a Sub-groups will look at different parts of the service, and this will help with planning and deciding what needs to be done.
- b Staff training and support
- c Independence and Choice
- d Equal chances
- e Voluntary organizations: Allowing funding to run for longer periods of time is being thought about.



Services Information

Simon Froud did a presentation and talked about information on numbers of people with a learning disabilities in the service, provision, and how money is spent.



Greenwich has quite a lot of out of borough placements for **people with complex needs**. Work is being done to look at bringing some people back as more provision is developed in the Borough.

7. Feedback from subgroups

Services from BME groups, Dean Bogle:

The new champion is **Evette Vaughan**. The group visited Woolwich Dockyard to look at the service and said it was very good.

The group want more people from the Black and minority ethnic community to join.



Dean

Housing Sub-group

The Action Plan for 2006/07 has been reviewed and written and will come back to this Board.

8. Beacon Update (Marie-Ann Brown)

Beacon website: nearly complete. This will give information by sound rather than text.

Open day 2 November: **Rob Greg** will speak. There is a choice of workshops.

Future plans: There are plans to have a national conference with other Beacons Councils in April '07.



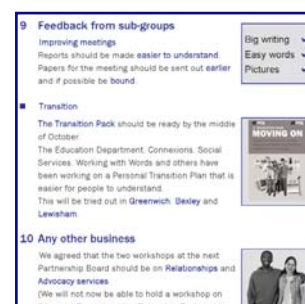
Rob Greg

9 Any other business

a **Minutes:** The 'easyread' minutes will be sent out and the more detailed ones kept for reference.

b **Disability Rights Commission authors' final report:** **Sarah Burchell** said there had been a final report into the health of people with learning disabilities and/or mental health issues. **The Health Strategy group** will look into this and keep the Board updated.

c **Cornwall Audit Investigation:** **Simon** said that there had been a big investigation in Cornwall about how services



Easyread minutes

for people with learning disabilities were managed.

It looked at lots of issues and the Healthcare Commission has recommended how organisations work together. **Sarah Burchell** and **Robert Templeton** have looked at the report and have come up with some plans and proposals for Greenwich to follow. The next Board meeting will look at this.



Cornwall

- d **Olywyn Bond's retirement:** Olwyn, Day Services Manager at Woolwich Dockyard, is leaving Greenwich after 37 years. Simon said thank you from the board for her work for services.

Leaving do: Woolwich Dockyard, 10.00am. – 12.00 pm on Wednesday 27 September.

- e **Peter Smith** from Lewisham Partnership Board will come to some of the Board meetings to observe as part of an arrangement with **Dino** who will go to some of Lewisham's meetings.

10. Date of next meeting:

10.45 Friday 8 December 2006.

At **Forum @ Greenwich**, Trafalgar Road Greenwich SE10.



Forum @ Greenwich