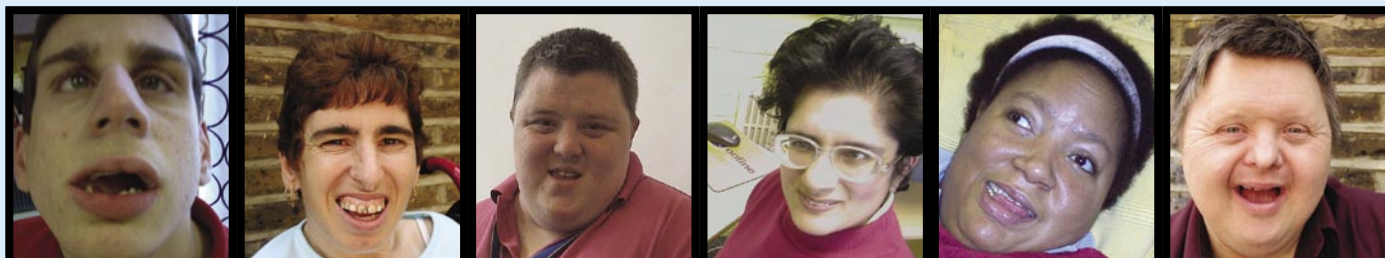


Who are we?



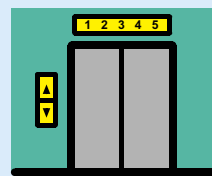
Adam, Rachel, Scott, Ravinder, Shantel and Paul.

Members of the Towards Citizenship Group.

What do we do?

We meet one Thursday and Friday every month at The Forum @ Greenwich. We get together because we want to find out what it is like for people with learning disabilities to get out into different places in Greenwich. We want to visit places that people need to go like: the shops, the bank, post office, council buildings and so on. We also want to visit places people go to enjoy themselves like: the cinema, restaurants, bowling centres, sport centres.

In this newsletter we will tell you about 2 of the places we have visited and what we thought of them. We have been using these pictures to help us review a place:



Town hall visit

On Thursday 12th May Scott, Adam and Ravinder got the 177 bus from Christchurch Forum to Woolwich.



We wanted to visit Woolwich Town Hall to find out how we can show people some of the artwork we make in our Day Service projects.

We also wanted to see how easy it was for disabled people to get in and out of the Town Hall and if the staff would be helpful and friendly.

Inside the Town Hall there is a reception. The person behind the reception desk called us over and asked if she could help us. She told us her name and that we were welcome to look round the Town Hall.

We asked about how we could show our artwork in the Town Hall. The receptionist said that we were welcome to display pictures and paintings at the Town Hall and gave us the name and number for the person we would need to speak to, to organise an exhibition. The receptionist was very helpful and took her time explaining things to us.

Afterwards we had a look round the ground floor of the building. It is a beautiful old building.

It was a good visit and we felt welcome there. Because of our visit an exhibition has been arranged in the Town Hall of pictures and paintings from the day services – please go along and have a look from 15th – 29th August.



Visit to The Arches Leisure Centre



Many people with learning disabilities use The Waterfront Leisure centre but we wanted to see what it is like at some of the other leisure centres in Greenwich.

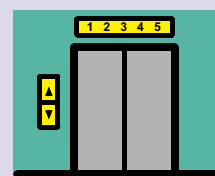
We decided to visit The Arches Leisure Centre in Greenwich. Scott wanted to find out how to become a member. We also wanted to have a look round the centre.

Scott said:

❗ I met a member of staff in the reception. He explained where I needed to go to find out about becoming a member. The man asked me how he could help me and he was friendly and smiling. He gave me a form to fill in and explained to me how to do it. I also asked the man if we could have a look round the centre. He said that was fine.

We had a good look. There were a lot of children, which made it quite noisy. We couldn't see any signs for the disabled toilet so we had to ask a staff member. We had a look at the disabled toilet, which was also a changing area for disabled people.

The staff was very friendly and helpful but we think there should be more and better signs, which would make it easier for all people to find their way around The Arches."



Competition

Would you like to win a meal for two at the cafe' at the Forum in Greenwich? You might be lucky if you tell us the right answer!

What is the name of the road where the Town Hall is?

All the right answers will be entered into a draw on 13th October to find a winner!

Is the answer :

A Wellington Street **B** Woolwich Road **C** Powis Street

If you know Adam, Scott, Ravinder, Shantel, Rachel or Paul you can write your answer on a piece of paper and give it to them or you can post your answer to:

Kalle Hogh

Towards Citizenship – The Project

821 Woolwich Road

London SE7 8LJ

Email your answer to: **Kalle.Hogh@greenwich.gov.uk**

Phone Kalle at the Towards Citizenship Project on:

020 8854 0222 ext. 212

