

Black and Minority Ethnic Sub-Group of the Partnership Board

What does ethnic mean?

It means feeling **part of a group** (like Pakistani, Rumanian, African or Turkish)

It can mean feeling **different from other groups**.

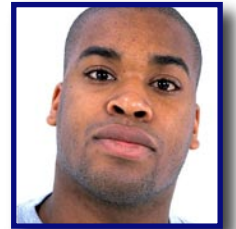
It is about things like:

- the country **where you were born**
- the country where **your parents' were born**
- your **nationality** (like Nigerian or Greek)
- the **language** you speak at home (like Punjabi or French)
- your **skin colour**
- your **religion** (like Muslim or Hindu)

So you may feel you are Indian, Afro-Caribbean, Irish, Vietnamese, Polish, Bengali, Chinese, Somali, or from another group. You can also feel **British** at the same time.

Being a member of any ethnic group is something that is important to **you**.

Being a **minority ethnic group** means that your group is not the biggest one in the country where you live - most people are **not** part of your ethnic group.



Agenda for Ethnicity

What is a sub-group?

- It's a small group of people who meet:
 - to talk about particular things
 - to feedback their views to the Partnership Board.
- They are a good way to find out what different people want from services
- The Government's **Valuing people** tells us we **need** to have a sub-group for black and minority ethnic people.



Sub group

Black and Minority Ethnic Sub-group vision

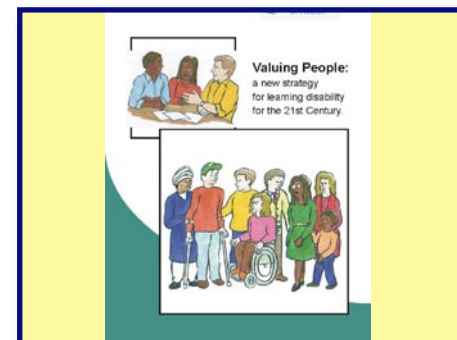
- **To make services better** for people with learning disabilities and their carers from minority communities.
- To make sure that minority communities are **involved** in all services, like jobs, health and housing.



Better services

Why we need a BME sub-group

- **Valuing People** says that people from minority ethnic groups often have a difficult time in the UK
- The numbers of people living in Greenwich are **going up**. This means more need for health, housing, day and other services which meet the cultural needs of people from black and minority ethnic communities.
- **1 in 4** of these are from black and minority ethnic communities.



Valuing People

- More than **100 languages** are spoken in Greenwich Borough.
- People with learning disabilities and their families from minority ethnic communities can find it hard to find and use services that **really** meet their needs.



Greenwich Service Users

What are we going to do?

- Make sure we identify and meet the needs of people from minority ethnic backgrounds in **all** areas of services.
- Work with **other groups** to make sure plans work for **all** communities.
- Give advice to the **Partnership Board** on what it and other groups need to do.



Partnership Board

How are we going to do it?

- Make links with more **community groups** and help them to take part more
- Look at **Partnership Board Strategies**
- Work with people and families **from a younger age**
- Ask users and carers for information about the **services** we do and don't provide
- Look at how people from BME backgrounds take up services



The Adult Strategy

Who can help?

- Community Organisations
- Service Users from Minority Ethnic groups
- Parents and Carers
- People **providing Services** (like Councils, the health service and charities)
- People who **pay for services** (like Councils and the health service)
- Staff in Social Services



Working together

We would like your views

- We need to write a work plan for this sub group.
- Is there **anything else** we should be doing over the next year?

Tell us your what you think!



Tell us what you think!